



**Mechanimix**

# HWM-B

HIGH EFFICIENCY AND LOW SHEAR FORCE WIDE BLADE PROPELLER  
CRYSTALLIZATION, EMULSION POLYMERIZATION, MULTIPHASE BLENDING

## INDUSTRIES

- CHEMICAL
- POLYMER
- API PRODUCTION
- CONSUMABLES
- HYDROMETALLURGY

## APPLICATIONS

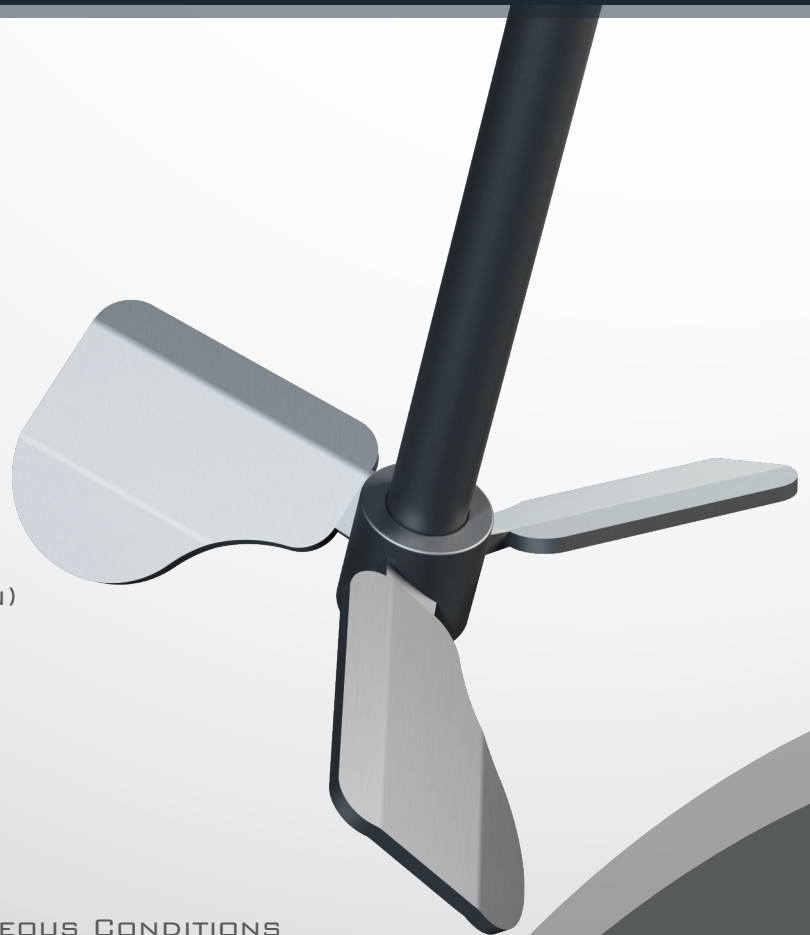
- CRYSTALLIZATION AND PRECIPITATION
- MULTIPURPOSE PLANTS
- POLYMERIZATION (SUSPENSION, EMULSION)

## ADVANTAGES

- LOW SHEAR FORCE
- EFFICIENT HEAT TRANSFER
- FAST MIXING TIMES
- RELIABLE SUSPENSION EVEN UNDER GASEOUS CONDITIONS

## FEATURES

- AXIAL PUMPING WIDE BLADE IMPELLER
- APPLICATION IN LOW TO MEDIUM VISCOSITY SYSTEMS
- HOMOGENEOUS ENERGY DISTRIBUTION
- MINIMUM LOCAL TURBULENCE



[www.mechanimix.com](http://www.mechanimix.com)  
[info@mechanimix.com](mailto:info@mechanimix.com)  
ODTÜ Teknokent/Ankara